

GangNam-BLUE™ Prestained Protein Ladder

iNtRON Biotechnology

Cat. No. 24054 250 *µ*l

Description

The GangNam-BLUE™ Prestained Protein Ladder is a blue protein standard with 11 pre-stained proteins covering a wide range molecular weights from 10 to 180kDa. Proteins are covalently coupled with a blue chromophore, and two reference bands (at 25kDa and 72kDa, respectively) are enhanced in intensity when separated on SDS-PAGE (Tris-glycine buffer). The GangNam-BLUE™ Prestained Protein Ladder is designed for monitoring protein separation during SDS-polyacrylamide gel electrophoresis, verification of Western transfer efficiency on membranes (PVDF, nylon, or nitrocellulose) and for approximating the size of proteins. The ladder is supplied in gel loading buffer and is ready to use.

General Use

- Mix thoroughly to ensure the homogeneous solution.
- 3 *µ*l or 4 *µ*l per loading for clear visualization during electrophoresis on 15-well or 10-well mini-gel, respectively.
- Load samples.
- Connect the power supply and start electrophoresis.

Contents

Approximately 0.1~0.5 mg/ml of each protein in the buffer (20mM Trisphosphate, pH 7.5 at 25°C), 2 % SDS, 0.2mM Dithiothreitol, 3.6 M Urea, and 15 % (v/v) Glycerol)

Storage

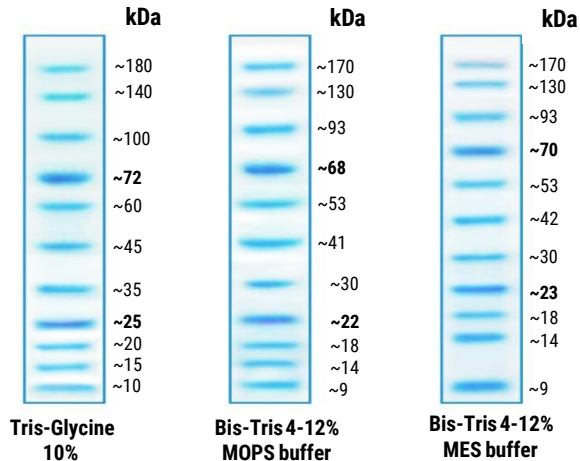
Stable for up to 3 months at 4°C. For long term storage, store at -20°C.

Quality Control

Under suggested conditions, GangNam-BLUE™ Prestained Protein Ladder resolves 11 major bands in 10% SDS-PAGE (Tris-glycine buffer) and after Western blotting on a nitrocellulose membrane.

Guide for Molecular Weight Estimation (kDa)

Migration patterns of GangNam-BLUE™ in different electrophoresis conditions are listed below.



Note : The apparent molecular weight (kDa) of each protein has been determined by calibration against an unstained protein ladder in each electrophoresis condition.

* supplement data should be considered for more accurate adjustment.

Caution : Not intended for human or animal diagnostic or therapeutic uses.

